



**AEROMOTIVE**  
**Part # 17301**  
**Fuel System Prime Kit**  
**INSTALLATION INSTRUCTIONS**

**CAUTION:**

Installation of this product requires detailed knowledge of automotive systems and repair procedures. We recommend that this installation be carried out by a qualified automotive technician.

Installation of this product requires handling of gasoline. Ensure you are working in a well ventilated area with an approved fire extinguisher nearby. Extinguish all open flames, prohibit smoking and eliminate all sources of ignition in the area of the vehicle before proceeding with the installation.

When installing this product, wear eye goggles and other safety apparel as needed to protect yourself from debris and sprayed gasoline.

**WARNING!**

The fuel system is under pressure. Do not open the fuel system until the pressure has been relieved. Refer to the appropriate vehicle service manual for the procedure and precautions for relieving the fuel system pressure.

Aeromotive system components are not legal for sale or use on emission controlled motor vehicles.

**This kit contains the following parts:**

12 inch 5/16" SAE30R9 Fuel Injection Hose	1 ea p/n 15114 Pump Inlet adapter
10 ft AN-06 stainless steel braided line	1ea sealing o-ring
6 ft AN-08 stainless steel braided line	1 ea AN-06 o-ring
1 ea AN-08 straight hose end	1 ea p/n 15606 AN-06 cutoff union
1 ea AN-08 90-degree hose end	1 ea p/n 15635 5/16" Barb to AN-06 Adapter
1 ea AN-06 straight hose end	1 ea p/n 15639 AN-10/AN-06 Port Inline adapter fitting
1 ea AN-06 90-degree hose end	1 ea p/n 15645 AN-08 Tank Bulk Head Fitting
1 ea p/n 11109 Pump	2 ea 7/32"-5/8" Hose Clamps

**Warning – The included Aeromotive fuel pump is not compatible with alcohol based fuels or fuel additives!**

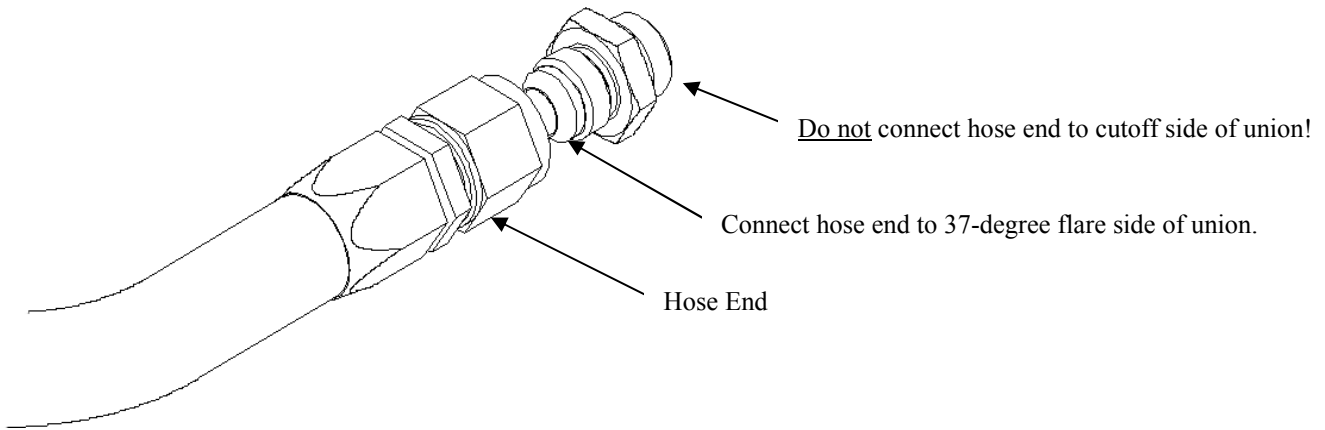
**The following steps are typical of most installations:**

Section 1 - Fuel Prime Pump Installation

Section 2 – Fuel Line Hose End Installation

Section 3 – Final Checks and System Start-up

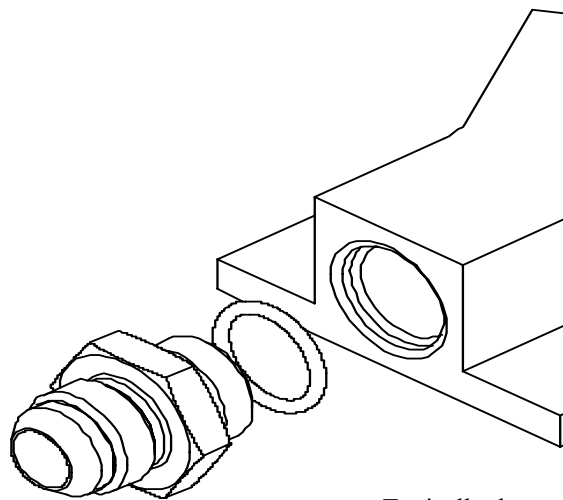
**Typical hose end to fitting connection:**



**Typical o-ring sealed port connection:**

O-ring sealed AN style port

O-ring  
(Install on union fitting between back  
of threads and face of hex nut.)



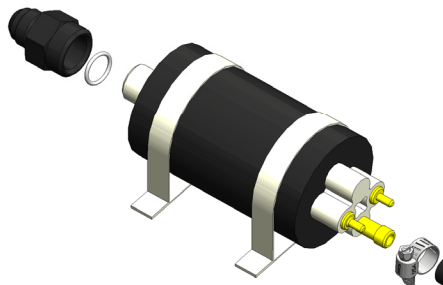
Typically the cutoff side of the union is used as the o-ring sealed side, leaving the 37-degree flare side for your hose end connection. In some cases both sides of the union utilize an o-ring seal. For example, in this kit a union connects the both ports of the fuel pump and filter.

## Section 1 - Fuel Prime Pump Installation:

- 1-1. Once the engine has been allowed to cool, disconnect the negative battery cable and relieve the fuel system pressure.
- 1-2. Raise the vehicle and support it with jack stands.
- 1-3. Drain and clean out any residual fuel from the fuel cell.
- 1-4. Find a suitable mounting location for an AN-08 outlet bulkhead if your fuel cell does not have an existing provision. Drill a  $\frac{3}{4}$ " hole in the fuel cell, clean out any debris you may have introduced into the fuel cell and install the provided tank bulkhead fitting.
- 1-5. Below is the overall layout of the prime system. Start off by finding a suitable mounting location for the fuel pump.



- 1-6. Remove the threaded brass fitting on the inlet side of the fuel pump and replace with the included o-ring and adapter fitting.



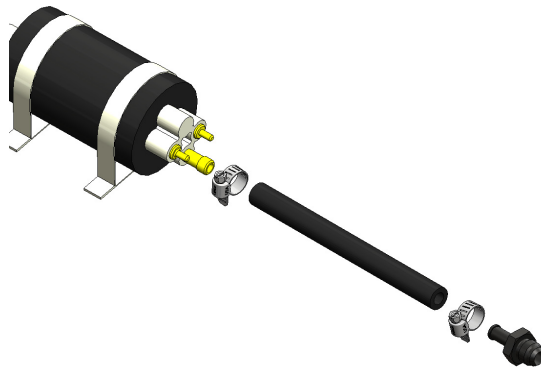
1-7. Plumb the inlet side of the prime pump using the supplied AN-08 hose and hose ends, refer to Section 2 for hose end installation instructions. It is recommended that a 100 micron fuel filter similar to Aeromotive 12316 be installed between the fuel cell and the primer pump.

**Note: Be sure to route all fuel lines clear of any moving suspension or drivetrain components and any exhaust components! Protect fuel lines from abrasion and road obstructions or debris.**



1-8. Install a short section of the 5/16" fuel injection rubber hose on the outlet side of the pump using one of the provided hose clamps.

1-9. Install the 5/16" Barb to AN-06 adapter fitting on the other end of the fuel injection rubber hose using the second hose clamp.



1-10. Install the AN-10 / AN-06 Port adapter fitting in the outlet of your fuel pump.



1-11. Install the AN-06 union fitting and o-ring into the AN-10 pump adapter fitting.

1-12. Using the supplied AN-06 hose and hose ends plumb the primer pump outlet line, referring to Section 2 for hose end installation instructions.



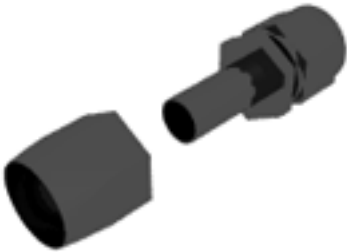
## Section 2 - Fuel Line Hose End Installation:

### CAUTION:

**When assembling this product, wear eye goggles and other safety apparel as needed to protect yourself from debris and sharp edges.**

2-1. Wrap hose with masking tape at desired cutoff length. Cut hose through masking tape squarely to desired length using a cut-off machine or a fine tooth hacksaw. Remove the masking tape.

2-2. Unthread the hose socket from the rest of the hose end fitting.



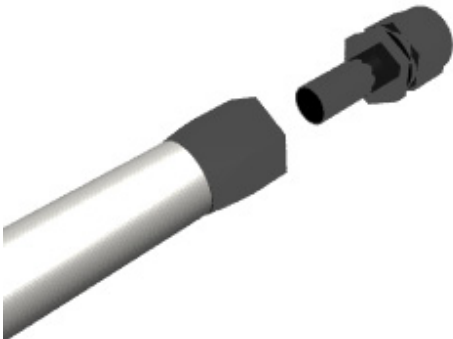
2-3. Insert hose in the socket with a twisting and pushing motion until the hose is fully seated in the socket.



2-4. Using a grease pencil, marker or tape, mark the location of the hose in relation to the hose socket that you just installed.

2-5. Using a light oil, lubricate the inside of the hose and hose end mating parts.

2-6. Carefully thread the hose end onto the hose socket, making sure that the hose does not push out of socket, by observing the mark you placed on the hose in step 3-4.



2-7. Using a properly sized wrench, complete threading the two components together (The maximum allowable gap between the two fitting components is .030 inches).



2-8. Inspect the hose for push out by comparing the mark you made on the hose in step D to the hose end socket location.

2-9. Clean all debris from exterior and interior of hose.

2-10. All lines should be tested to twice their operation pressure prior to use.

## Section 3 – Final Checks and System Start-up

3-1. **Ensure that any spilled gasoline and any gasoline soaked shop towels are cleaned up and removed from the vicinity of the vehicle!**

3-2. Carefully lower the car onto the ground.

3-3. Fill the fuel tank with gasoline and check for any leaks in the system, if any leaks are found repair immediately.

**CAUTION: While performing the following steps, if any fuel leaks are detected, immediately turn the ignition of OFF, remove any spilled fuel and repair the leak(s) before proceeding!**

3-4. Reconnect the battery and turn the primer pump “ON” **WITHOUT** starting the car. After several seconds, check the fuel pressure. If there is no fuel pressure, turn the primer pump “OFF”, wait one minute, return the primer pump “ON” position, and recheck the fuel pressure. Repeat this OFF and ON procedure until the fuel pressure gauge registers fuel pressure.

**3-5. With the fuel pressure gauge registering fuel system pressure, check for fuel leaks throughout the entire fuel system! If any fuel leaks are found, turn the ignition key to the OFF position, remove any spilled fuel and repair the leak before proceeding!**

**3-6. Test drive the car to insure proper operation and re-check the fuel system for leaks. If any leaks are found, immediately discontinue use of the vehicle and repair the leak(s)!**

Thanks for purchasing another quality product designed, engineered and manufactured in Kansas City,  
USA!

---

**AEROMOTIVE, INC.**  
7805 Barton Street, Lenexa, KS 66214  
913-647-7300 fax 913-647-7207

## ***AEROMOTIVE, INC. LIMITED WARRANTY***

This Aeromotive Product, with proof of purchase dated on or after January 1, 2003, is warranted to be free from defects in materials and workmanship for a period of one year from the original date of purchase. No warranty claim will be valid without authentic, dated proof of purchase.

This warranty is to the original retail purchaser and none other and is available directly from Aeromotive and not through any point of distribution or purchase.

If a defect is suspected, the retail purchaser must contact Aeromotive directly to discuss the problem, possible solutions and obtain a Return Goods Authorization (RGA), if deemed necessary by the company. Please call 913-647-7300 and dial option 3 for the technical service dept. All returns must be shipped freight pre-paid to the company and with valid RGA before they will be processed.

Aeromotive will examine any product returned with the proper authorization to determine if the failure resulted from a defect or from abuse, improper installation, misapplication or alteration. Aeromotive will then, at it's sole discretion, return, repair or replace the product.

If any Aeromotive product is determined defective, buyer's exclusive remedy is limited in value to the sale price of the good. In no event shall Aeromotive be liable for incidental or consequential damages.

Aeromotive expressly retains the right to make changes and improvements in any product it manufactures and sells at any time. These changes and improvements may be made without notice at any time and without any obligation to change the catalogs or printed materials.

Aeromotive expressly retains the right to discontinue at any time and without notice any Aeromotive product that it manufactures or sells.

This warranty is limited and expressly limits any implied warranty to one year from the date of the original retail purchase on all Aeromotive products.

No person, party or corporate entity other than Aeromotive shall have the right to: determine whether or not this Limited Warranty is applicable to any Aeromotive product, authorize any action whatsoever under the terms and conditions of this Limited Warranty, assume any obligation or liability of any nature whatsoever on behalf of Aeromotive under the terms and conditions of this Limited Warranty.

This Limited Warranty covers only the product itself and not the cost of installation or removal.

This Limited Warranty is in lieu of and expressly excludes any and all other warranties, expressed or implied. This Limited Warranty gives you specific legal rights, and you may also have other rights which vary from state to state.