



FEATURED PRODUCTS

Version 4.0

TRUE VARIABLE SPEED  
**BRUSHLESS**  
**BRUSHLESS**  
 NEW 90 DEGREE OUTLETS



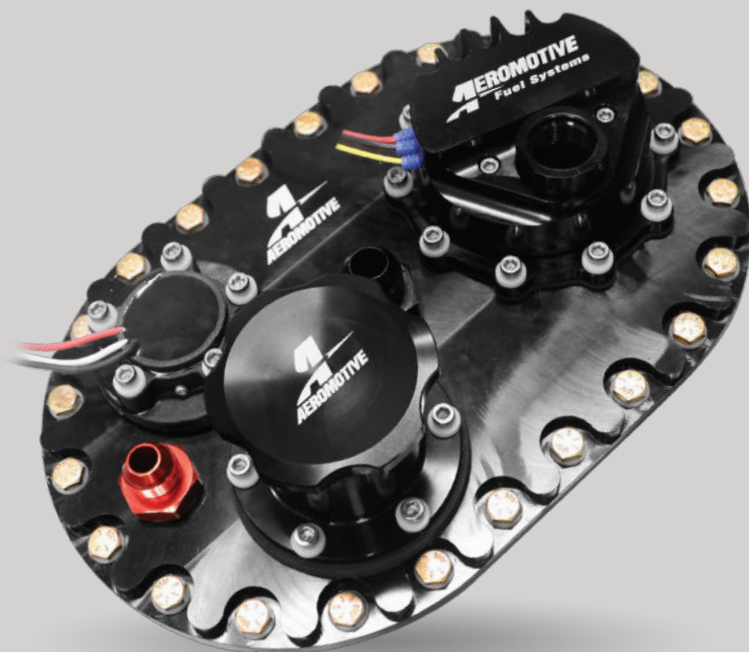
- Easy to Plumb
- Low Clearance
- New 90° Outlets

Combine with our Fuel Cell Plate (below)!

MODEL	PUMP ONLY	6 GAL	15 GAL	20 GAL
A1000	#18065	#19301	#19307	#19313
ELIMINATOR	#18066	#19302	#19308	#19314
BRUSHLESS 3.5	#18067	#19303	#19309	#19315
BRUSHLESS 5.0	#18068	#19304	#19310	#19316
BRUSHLESS 7.0	#18069	#19305	#19311	#19317
BRUSHLESS 10	#18070	#19306	#19312	#19318



**FUEL CELL PLATE** FUEL PUMP & ACCESSORY MOUNT



- Two Different Plate Configurations Allow for Pump Options to Suit Most Fuel Flow Requirements
- Integrated Roll-Over Valve
- Provisions for a Tube Style Sending Unit
- Billet Fuel Filler Neck and Cap
- Bolt Pattern to Accommodate Most Fuel Cells with 6" x 10" Filler Plate
- Return Line Port Fittings Included
- Nut Ring and Gasket Included

**Part #18056**

Plate with Provisions for Aeromotive Phantom In-Tank Systems (Phantom 200, 340, Dual 340, and Flex) and In-Tank Fuel Cell Pump Line (A1000, Eliminator, 3.5 GPM, 5.0 GPM, 7.0 GPM, and 10.0 GPM TVS/Brushless/Brushed Pumps)

**Part #18057**

Plate with Provisions for Aeromotive Trifekta In-Tank System (Aeromotive Trifekta, Triple 450, and Dual 450 in-Tank Systems)

# UNIVERSAL IN-TANK FUEL PUMPS



## UNIVERSAL IN-TANK PHANTOM 200 OR 340

200LPH #18398		
	Naturally Aspirated	Forced Induction
EFI	600hp	450hp

340LPH #18329		
	Naturally Aspirated	Forced Induction
EFI	850hp	700hp

### Returnless EFI Phantom In-Tank

- Stealth in-tank, baffled fuel pump
- 55-60 PSI internal bypass valve for returnless installations
- ORB-06 outlet and vent ports
- Gasoline and Ethanol compatible
- Made for non-pulse modulated return-less systems.

## UNIVERSAL 16-BOLT PHANTOM 340 OR 450

In-Cell Depth Adjustable Pump – Cut to Length

### Part #18085 - 340LPH

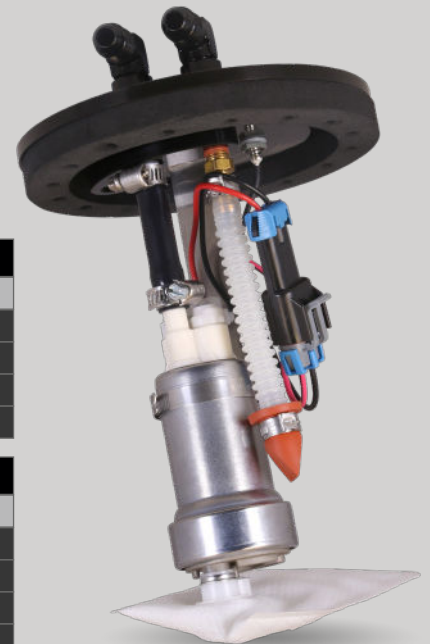
Drop-in 340 Phantom style fuel pump with outlet plate featuring a universal 16-bolt pattern on a 5" bolt circle. Designed for existing fabricated tanks and fuel cells with this bolt pattern that would otherwise require an adapter plate to use a standard Phantom fuel pump kit. Includes foam and bladder baffle and is adjustable for tanks between 7"-11" deep.

### Part #18086 - 450LPH

Drop-in 450 Phantom style fuel pump with same universal 16-bolt pattern. Designed to fit existing fabricated tanks and fuel cells which are already baffled and do not require the Phantom foam and bladder baffle, which is not included. Adjustable for tanks from 7"-11" deep.

340LPH #18085			
		Naturally Aspirated	Forced Induction
GAS	EFI	1,100hp	800hp
	Carb	1,300hp	800hp
E85	EFI	750hp	550hp
	Carb	900hp	700hp

450LPH - 7.5" depth #18086			
		Naturally Aspirated	Forced Induction
GAS	EFI	1,100hp	800hp
	Carb	1,300hp	800hp
E85	EFI	750hp	550hp
	Carb	900hp	700hp



## UNIVERSAL PHANTOMDUAL 450

Naturally Aspirated Gas 2,200hp and E85 1,500hp for EFI setups

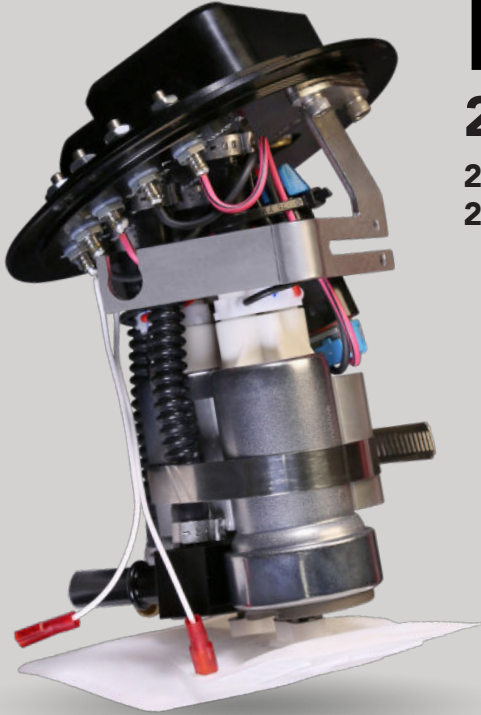
- (2) 450 LPH Stealth Fuel Pumps
- Black anodized outlet hat
- (4) ORB-08 Ports 2x Supply, (1) Return, (1) Vent
- Larger capacity fuel resistant baffle/basket (Includes: Foam & Bladder)
- (2) Universal high flow pre-pump filters
- Modular design can be cut to height to fit 7-11 Deep Tanks
- EFI or Carbureted
- Quiet turbine pump mechanisms increase durability
- In-tank use only



#18365

# PERFORMANCE APPLICATION SPECIFIC PUMPS

Aeromotive Inc. is excited to expand on its line of in-tank fuel pump modules. Now available for the most popular late model applications, from the S550 Mustang to Jeep Gladiators. Configurable with a variety of single and multi-pump options to support the demands of the most powerful builds on the street. High-flow fuel delivery has never been easier.



## HELLCAT<sup>®</sup> ( Not SRT/RT ) #18092-18093

### 2015+ Hellcat<sup>®</sup> Charger/Challenger

2006+ Charger | 2008+ Challenger | 2005+ Chrysler 300C  
2005-08 Dodge Magnum #18096-18097

- Direct Drop-In Module – Utilizes OEM Tank, Lock Ring, and Gasket
- Available in Dual or Triple Pump Configurations
- Dual -08 ORB Outlet Ports (Main and Auxiliary)
- Requires the use of a Return Style Regulator and Return Line
- Incorporates OEM Fuel Level Sender (Early or Late Model Level Sender Brackets Included)
- Utilizes OEM Jet Siphon and Pickup

#### DUAL (525+450LPH) #18092

	Naturally Aspirated	Forced Induction
GAS	2,150hp	1,610hp
E85	1,485hp	1,120hp

#### DUAL (450+450LPH) #18096

	Naturally Aspirated	Forced Induction
GAS	2,075hp	1,500hp
E85	1,410hp	1,035hp

#### DUAL (525+525LPH) #18094

	Naturally Aspirated	Forced Induction
GAS	2,225hp	1,610hp
E85	1,515hp	1,110hp

#### TRIPLE (525+450+450LPH) #18093

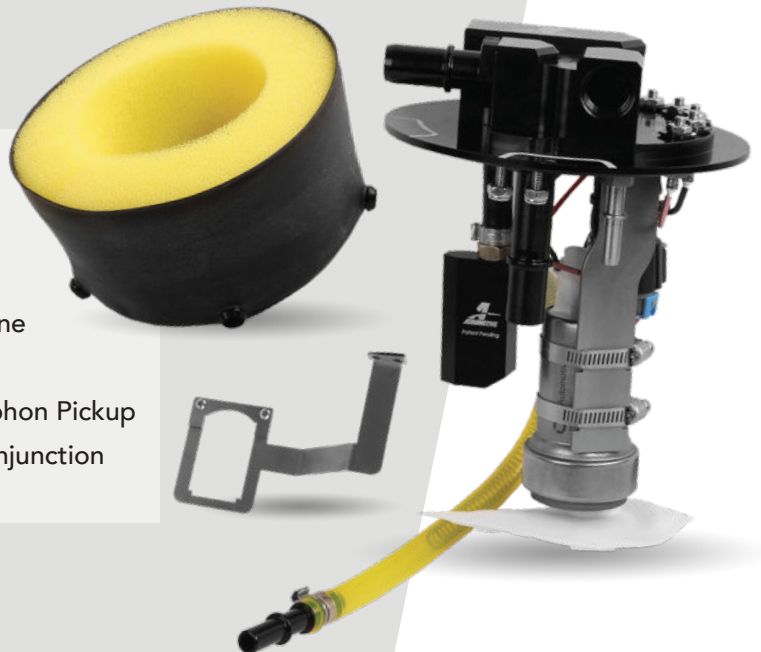
	Naturally Aspirated	Forced Induction
GAS	3,250hp	2,410hp
E85	2,235hp	1,670hp

#### TRIPLE (450+450+450LPH) #18097

	Naturally Aspirated	Forced Induction
GAS	3,175hp	2,300hp
E85	2,160hp	1,585hp

## GLADIATOR + HELLCAT<sup>®</sup> CONVERSION

- Direct Drop-In Module – Utilizes OEM Gladiator Tank, Lock Ring, and Gasket
- Utilizes Single 525LPH Pump
- Single ORB-10 Outlet Port
- Optional use of a Return Style Regulator and Return Line
- Incorporates OEM Fuel Level Sender and Vent
- Utilizes Patented Aeromotive Jet Siphon with OEM Siphon Pickup
- Utilizes Patented Aeromotive Foam and Bladder in Conjunction with Bladder Check Valves to Control Fuel Slosh



#### 525LPH #18078

	Naturally Aspirated	Forced Induction
GAS	1,050hp	810hp
E85	735hp	570hp



# 2008-2020 SUBARU WRX/STI



- Direct Drop-In Module – Utilizes OEM Tank, Lock Ring, and Gasket
- Available in Single or Dual Pump Configurations
- Single ORB-06 Outlet Port
- Requires the use of a Return Style Regulator and Return Line
- Incorporates OEM Fuel Level Sender
- Utilizes Patented Aeromotive Jet Siphon and OEM Siphon Pickup
- Utilizes Patented Aeromotive Foam and Bladder to Control Fuel Slosh

DUAL (340LPH) #18082		
	Naturally Aspirated	Forced Induction
GAS	1,575hp	1,295hp
E85	1,100hp	905hp

SINGLE (340LPH) #18080		
	Naturally Aspirated	Forced Induction
GAS	725hp	595hp
E85	505hp	415hp

SINGLE (450LPH) #18081		
	Naturally Aspirated	Forced Induction
GAS	975hp	700hp
E85	660hp	485hp

# 2016-2020 YAMAHA YXZ

- Direct Drop-In Module – Utilizes OEM Tank, Lock Ring, and Gasket
- Utilizes Single 200LPH Pump
- ORB-06 Outlet and Return Ports
- Requires use of a Return Style Regulator and Return Line
- Incorporates OEM Fuel Level Sender, and Vent
- Utilizes Patented Aeromotive Foam and Bladder to Control Fuel Slosh

220LPH #18316		
	Naturally Aspirated	Forced Induction
GAS	600hp	450hp



# HONDA TALON



- Direct Drop-In Module – Utilizes OEM Tank, Lock Ring, and Gasket
- Utilizes Single 220LPH Pump (E-85 Compatible)
- 3/8 Quick Connect Outlet Fitting
- Two Pump Configurations in One Module Returnless Style with Pulse Width Modulation of Pump or Optional use of a Return Style Regulator and Return Line
- Incorporates OEM Fuel Level Sender and Vent
- Utilizes Patented Aeromotive Foam and Bladder to Control Fuel Slosh

220LPH #18058		
	Naturally Aspirated	Forced Induction
GAS	600hp	450hp
E85	420hp	315hp

# PERFORMANCE APPLICATION SPECIFIC PUMPS

- Direct Drop in for OEM Tank
- Utilizes Patented Aeromotive Jet Siphon in conjunction with OEM Siphon Pickup
- Utilizes Patented Aeromotive Foam and Bladder Baffle System with Integrated Check Valves to Combat Fuel Slosh
- -08 ORB Outlet and Return Ports
- Fuel Level Sender Bracket to Utilize OEM Fuel Level Sender

2012-2016

## SCION FR-S

2012-2020

## SUBARU BRZ

2012-2021

## TOYOTA 86

Single (450LPH) #19109		
	Naturally Aspirated	Forced Induction
GAS	975hp	700hp
E85	660hp	485hp

Dual (450LPH) #19110		
	Naturally Aspirated	Forced Induction
GAS	2,075hp	1,500hp
E85	1,410hp	1,035hp

S197/ S550 FORD **MUSTANG** 2011-2017 Mustang (S197 & S550)  
2018-2020 (GT/ECoboost)



- Direct Drop in for OEM Tank
- Single Pump Simplifies Wiring and Plumbing Over Multi-Pump Configurations
- Brushless Motor with Remote Mount Controller for Reduced Amp Draw
- Utilizes Patented Aeromotive Jet Siphon in conjunction with OEM Siphon Pickup
- Integrated 100 Micron Pre-Filter
- True Variable Speed Controller
- -08 ORB Outlet and Return Ports
- Fuel Level Sender Bracket to Utilize OEM Fuel Level Sender



In-Tank Brushless Pump Modules	
#19105	Brushless A1000
#19106	Brushless Eliminator
#19107	Brushless 3.5 GPM Gear Pump
#19108	Brushless 5.0 GPM Gear Pump



- Direct Drop-In Module – Utilizes OEM Tank, Lock Ring, and Gasket
- Available in Single, Dual, or Triple Pump Configurations
- Dual ORB-08 Outlet Ports (Main and Auxiliary)
- Requires the use of a Return Style Regulator and Return Line
- Incorporates OEM Fuel Level Sender
- Utilizes Patented Aeromotive Jet Siphon and OEM Siphon Pickup

SINGLE (450LPH) #18036		
SYSTEM: SINGLE 450LPH #17353		
	Naturally Aspirated	Forced Induction
GAS	975hp	700hp
E85	660hp	485hp

DUAL (450LPH) #18037		
SYSTEM: DUAL 450LPH #17355		
	Naturally Aspirated	Forced Induction
GAS	2,075hp	1,500hp
E85	1,410hp	1,035hp

DUAL (340LPH) #18039		
SYSTEM: DUAL 340LPH #17354		
	Naturally Aspirated	Forced Induction
GAS	1,575hp	1,295hp
E85	1,100hp	905hp

TRIPLE (450LPH) #18038		
SYSTEM: TRIPLE 450LPH #17356		
	Naturally Aspirated	Forced Induction
GAS	3,175hp	2,300hp
E85	2,160hp	1,585hp

Systems Include Appropriate Regulator, Filter & Gauge



1988-1997

# CHEVY TRUCK

GM 1500 + 2500 Series Trucks (V8 only)



200LPH #18378		
	Naturally Aspirated	Forced Induction
EFI	600hp	450hp
Carb	750hp	600hp

340LPH #18379			
	Naturally Aspirated	Forced Induction	
GAS	EFI	850hp	700hp
	Carb	1,000hp	850hp
E85	EFI	595hp	490hp
	Carb	700hp	595hp

- High Performance Replacement for Stock Tanks
- Perfect for EFI Engines Including LS Swaps
- Direct Replacement into the OEM Fuel Tank
- 0-90 Ohm Fuel Level Sending Unit Included
- Billet Hat with AN-06 Outlet and Return Fittings Included
- Plug-and-Play; Comes Pre-Assembled with Fuel Pump and Sending Unit Pre-Installed and Calibrated

1999-2004 or  
2005-2021

# CHEVY TRUCK

Direct Drop-In Phantom systems designed for your late model Chevy or GM Truck.

- System designed to work with OEM plastic fuel tanks only
- Phantom system will accommodate 8.25" 14.00" or 17.00" deep tanks

## 1999-2004

SINGLE 340LPH #18312			
		Naturally Aspirated	Forced Induction
GAS	EFI	850hp	700hp
	Carb	1,000hp	850hp
E85	EFI	595hp	490hp
	Carb	700hp	595hp

DUAL 340LPH #18313			
		Naturally Aspirated	Forced Induction
GAS	EFI	1,700hp	1,400hp
	Carb	2,000hp	1,700hp
E85	EFI	1,190hp	980hp
	Carb	1,400hp	1,190hp

SINGLE 450LPH #18314			
		Naturally Aspirated	Forced Induction
GAS	EFI	1,100hp	800hp
	Carb	1,300hp	950hp
E85	EFI	750hp	550hp
	Carb	900hp	700hp

## 2005-2021

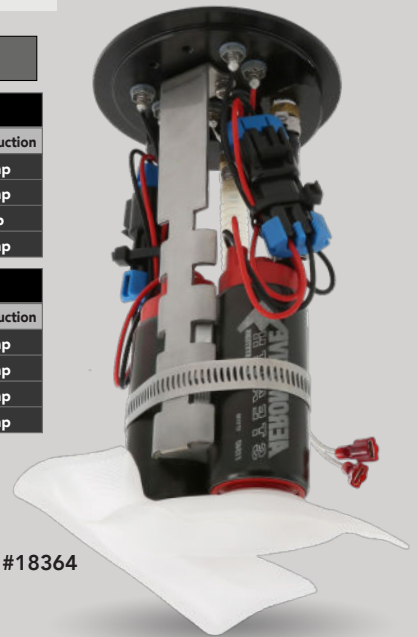
SINGLE 340LPH #18356			
		Naturally Aspirated	Forced Induction
GAS	EFI	850hp	700hp
	Carb	1,000hp	850hp
E85	EFI	595hp	490hp
	Carb	700hp	595hp

SINGLE 450LPH #18358			
		Naturally Aspirated	Forced Induction
GAS	EFI	1,100hp	800hp
	Carb	1,300hp	950hp
E85	EFI	750hp	550hp
	Carb	900hp	700hp

TRIPLE 450LPH #18364			
		Naturally Aspirated	Forced Induction
GAS	EFI	3,300hp	2,400hp
	Carb	3,900hp	2,850hp
E85	EFI	2,250hp	1,650hp
	Carb	2,700hp	2,100hp

DUAL 340LPH #18357			
		Naturally Aspirated	Forced Induction
GAS	EFI	1,700hp	1,400hp
	Carb	2,000hp	1,700hp
E85	EFI	1,190hp	980hp
	Carb	1,400hp	1,190hp

DUAL 450LPH #18359			
		Naturally Aspirated	Forced Induction
GAS	EFI	2,200hp	1,600hp
	Carb	2,600hp	1,900hp
E85	EFI	1,500hp	1,100hp
	Carb	1,800hp	1,400hp



#18313

#18364

GM/CHEVY FUEL LEVEL

# SENDER BRACKETS



#18717

Vehicle Platform	Year Range	Bracket Part #	Sending Unit Part # (Rock Auto)	Use with Aeromotive Part #s	Ohm Range
Silverado/Sierra 1500 Series	1999-2004	18712	911005 Dorman	18312, 18313, 18314	40-250
Silverado/Sierra 1500 Series	2005-2007	18713	5513490 (WVE)	18356, 18357, 18358, 18359, 18364	250-40
Trailblazer/Trailblazer SS	2005-2009	18714	911013 (Dorman)	18356, 18357, 18358, 18359, 18364	250-40
Silverado/Sierra 1500 Series	2008-2014	18715	SK1293 (AC Delco)	18356, 18357, 18358, 18359, 18364	250-40
Silverado/Sierra 1500 Series	2015-2018	18716	13582492 (AC Delco)	18356, 18357, 18358, 18359, 18364	250-40
Silverado/Sierra 1500 Series	1999-2004 into 2005+ Tank	18717	911005 Dorman	18356, 18357, 18358, 18359, 18364	40-250
Tahoe/Yukon	2008-2014	18718	SK1356 (AC Delco)	18356, 18357, 18358, 18359, 18364	250-40
Escalade	2009-2014	18718	SK1356 (AC Delco)	18356, 18357, 18358, 18359, 18364	250-40



# PERFORMANCE IN-TANK FUEL PUMPS MODULES

## 2005-2018 CHEVY TRUCK 1500 Series for Silverado/Sierra



- Direct Drop in for OEM Tank (1500 Series Only)
- Utilizes Patented Aeromotive Foam and Bladder Baffle System
- Brushless Motor with Remote Mount Controller for Reduced Amp Draw
- Up to 90psi Continuous Operating Pressure and up to 150psi Peak Pressure
- Integrated 100 Micron Pre-Filter
- True Variable Speed Controller
- Fuel Level Sender Brackets Available for 1500 Series Trucks
- 2022 Custom Automotive Network Best New Performance Product

3.5 GPM #18087			
		Naturally Aspirated	Forced Induction
GAS	EFI	2,400hp	1,800hp
	Carb	2,600hp	2,000hp
E85	EFI	1,680hp	1,260hp
	Carb	1,820hp	1,400hp

5.0 GPM #18088			
		Naturally Aspirated	Forced Induction
GAS	EFI	3,400hp	2,600hp
	Carb	3,600hp	2,700hp
E85	EFI	2,380hp	1,820hp
	Carb	2,520hp	1,890hp

## 2015-2020 FORD F150 23 or 36 Gal Tank

- Direct Drop-In Module – No Drilling Required
- Available in Dual 450LPH or Triple 450LPH Configurations
- Single ORB-10 Outlet Port
- Requires the use of a Return Style Regulator and Return Line
- Incorporates OEM Fuel Level Sender, and Vent
- Depth Adjustable between 23 and 36 Gallon Tanks
- Utilizes Patented Aeromotive Foam and Bladder Assembly to Control Fuel Slosh



DUAL (450+450LPH) #18090		
	Naturally Aspirated	Forced Induction
GAS	2,200hp	1,600hp
E85	1,500hp	1,100hp

TRIPLE (450+450+450LPH) #18091		
	Naturally Aspirated	Forced Induction
GAS	3,300hp	2,400hp
E85	2,250hp	1,650hp



# ENGINE COOLANT PUMP

High Flow Brushed Pump with Universal Remote Mount for Street or Drag Strip Applications.



This pump free flows at 27gpm at 13.5V with a max draw of 16A.



### Port Sizes

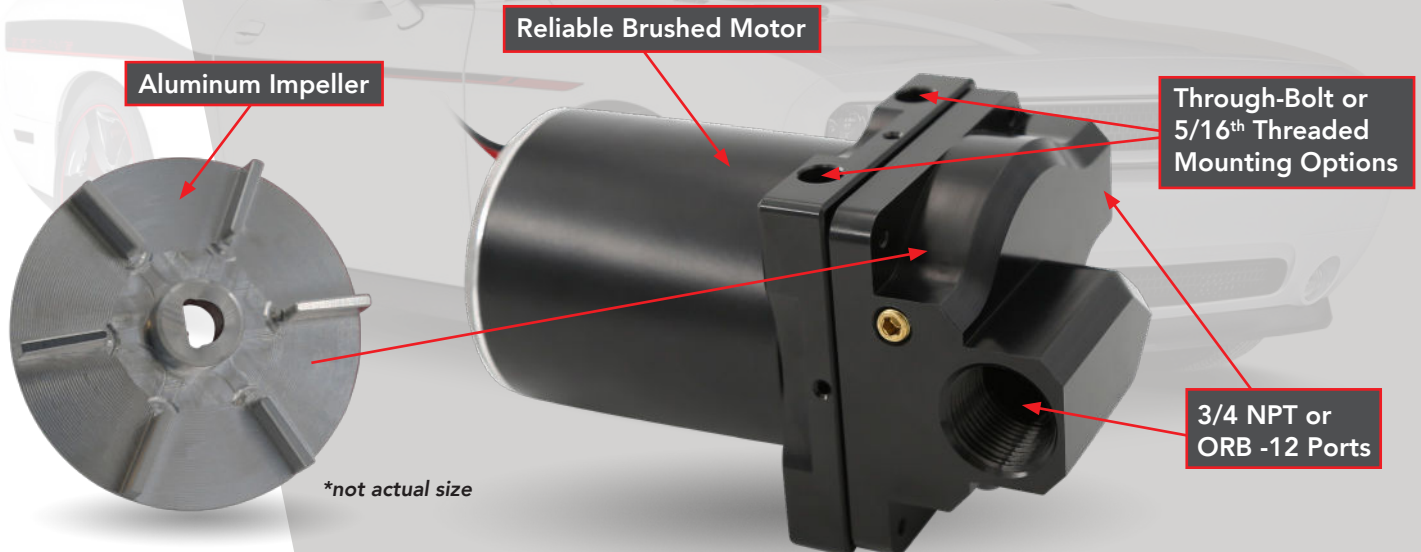
3/4 NPT

Part #24302

ORB -12

Part #24303

- Remote mount, inline electric pump for engine coolant
- Reliable brushed electric motor - no additional electronic components required
- Aluminum/stainless wetted part construction
- Higher flow rates at higher pressures than similarly sized competitors
- 3/4 NPT or ORB-12 ports for easy connections
- Dependable, long-lasting mechanical seal



## 1<sup>ST</sup> GEN CAMARO 1967-69 CHEVY CAMARO

- Perfect for EFI and carbureted engines
- OEM appearance and 18-gallon capacity
- High flow, quiet 200 or 340 Stealth fuel pump
- 0-90 Ohm fuel level sending unit included
- Billet hat with AN-06 outlet and return ports
- Utilizes OEM fuel outlet location and seal
- Featuring patented, award-winning Phantom Baffle technology for superior fuel slosh control
- Plug-and-play; comes pre-assembled with pump and sending unit in the tank, ready for install
- Utilizes stock mounting straps, filler cap and vent
- This product is not legal for sale or use on emission-controlled vehicles except when used as a direct replacement part matching OEM specifications.



#18157

YEARS	200LPH	340LPH
1967-68	#18157	#18457
1969	#18158	#18458

## 2<sup>ND</sup> GEN CAMARO 1970-81 CHEVY CAMARO



#18138

YEARS	200LPH	340LPH
1970-73	#18128	#18428
1974-77	#18135	#18435
1978-81	#18138	#18438

## 3<sup>RD</sup> GEN CAMARO 1982-1992 CHEVY CAMARO

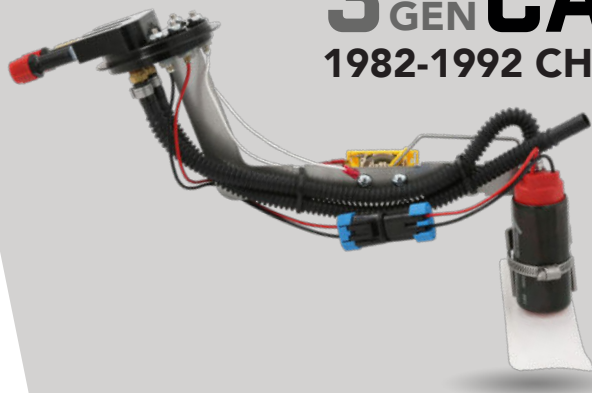


1982-1992

200LPH	340LPH
#18171	#18471

# 3<sup>RD</sup> GEN CAMARO

1982-1992 CHEVY CAMARO



1982-1992		
200LPH #18071		
	Naturally Aspirated	Forced Induction
EFI	600hp	450hp
Carb	750hp	600hp
340LPH #18073		
	Naturally Aspirated	Forced Induction
GAS	EFI 850hp	700hp
	Carb 1,000hp	850hp
E85	EFI 595hp	490hp
	Carb 700hp	595hp

- High Performance Replacement for Stock Tanks
- Perfect for EFI Engines Including LS Swaps
- Great with Carbureted Engines Using Regulator #13220
- Direct Replacement for OEM Pump and Hanger Assembly
- High Flow, Quiet 200 or 340 Stealth Fuel Pump
- 0-90 Ohm Fuel Level Sending Unit Included
- Billet Hat with AN-06 Outlet and Return Fittings Included
- Utilizes OEM Fuel Outlet Location and Seal
- Plug-and-Play; Comes Pre-Assembled with Fuel Pump and Sending Unit Pre-Installed and Calibrated

# 4<sup>TH</sup> GEN CAMARO

1993-2002 CHEVY CAMARO



1998-2002		
340LPH	340LPH DUAL	450LPH
#19101	#19102	#19103

1993-1997		
200LPH #18072		
	Naturally Aspirated	Forced Induction
EFI	600hp	450hp
Carb	750hp	600hp
340LPH #18074		
	Naturally Aspirated	Forced Induction
GAS	EFI 850hp	700hp
	Carb 1,000hp	850hp
E85	EFI 595hp	490hp
	Carb 700hp	595hp



# 5<sup>TH</sup> GEN CAMARO

2010-2015 CHEVY CAMARO

- Fits 2010-2015 (5th gen) Camaros
- ORB-08 outlet and return port
- Incorporates factory jet siphon system and sending unit
- Includes an integrated 100-Micron Stainless Steel pre-pump filter
- Utilizes the factory tank, o-ring, lock ring and mounting location
- Includes everything necessary to install the pump into your tank
- Requires the use of a bypass style regulator and return line

Part #	Naturally Aspirated	Forced Induction
#18673	1,300hp	1,000hp
#18674	1,900hp	1,400hp

# 6<sup>TH</sup> GEN CAMARO

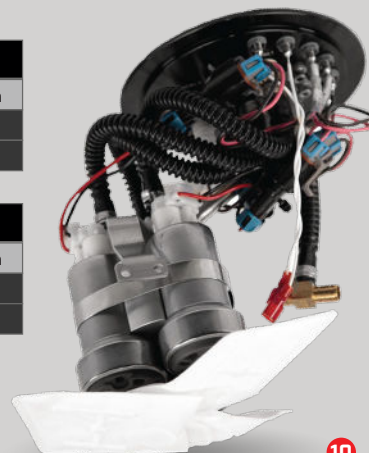
2016+ CHEVY CAMARO

2016-2019 Cadillac CTS-V/ATS-V

- Direct Drop-In Module – No Drilling Required
- Available in Dual 450LPH or Triple 450LPH Configurations
- Single -10 ORB Outlet Port
- Requires the use of a Return Style Regulator and Return Line
- Incorporates OEM Jet Siphon System, Fuel Level Sender and Vent

DUAL (450LPH) #18075		
	Naturally Aspirated	Forced Induction
GAS	2,075hp	1,500hp
E85	1,410hp	1,035hp

TRIPLE (450LPH) #18076		
	Naturally Aspirated	Forced Induction
GAS	3,175hp	2,300hp
E85	2,160hp	1,585hp





# 7.0/10.0 GPM PUMPS

Aeromotive's True Variable Speed Controller offers the advantages of built-in pump speed control via a dedicated 0-5V analog DC input signal. The Controller incorporates our existing brushless technology by reducing fuel flow. By reducing fuel flow, in times of low speed, it helps reduce current draw which then minimizes the introduction of environmental heat worries. No need for a six pack of small pumps or the worries that come with it. TVS controller for True Variable Speed built in!

## IN-TANK UNIVERSAL GEAR PUMPS

Part #18384 & #18385

Prefer to build your own tank or fuel cell? Need to support massive HP on gas or E85? Aeromotive's Universal Stealth 7 and 10 GPM Brushless Gear Pumps open the door to a car builder's wildest dreams. Complete, in-tank installation ready; includes gasket, in-tank C-Ring, prefilter and extendable pickup assembly.

## IN-TANK DROP-IN GEAR PUMPS

Part #18054 & #18055

Just as powerful and sleek as our external, here's the drop-in replacement for your existing Stealth Fuel Cell.

Thousands of HP capacity on gas, plus e85 and methanol compatibility, this is it!



#18054



#18384



#18385

	7.0GPM	10.0GPM	
<b>In-Tank</b>	<b>Part #</b>	<b>Part #</b>	
10" Drop-In	#18054	#18055	
Universal	#18384	#18385	
<b>Fuel Cell</b>	<b>Part #</b>	<b>Part #</b>	
6 Gallon	#18646	#18647	
15 Gallon	#18648	#18649	
20 Gallon	#18655	#18656	
<b>Gas</b>	<b>NA</b>	<b>FI</b>	<b>FI</b>
EFI	4,800hp	3,400hp	4,900hp
E85	NA	FI	FI
EFI	3,360hp	2,380hp	3,430hp

**BIG POWER  
NEEDS A  
BIG FILTER!**

Check out our newest high power filters on the next page...

# PERFORMANCE EXTERNAL & IN-TANK SPUR GEAR PUMPS

## EXTERNAL GEAR PUMPS Part #11197 & #11198

For the ultimate, electric fuel pump flow and HP capability, you're at the pinnacle with Aeromotive's 7 and 10 GPM Brushless Gear Pumps. Never before has this kind of flow at pressure been feasible in relatively small, lightweight, electric fuel pump. Externally mounted for easy access.



**WIRE IT  
NICE-N-TIGHT!**  
Check out our deluxe wiring kits on page 14



## FUEL CELL IN-TANK GEAR PUMPS Part #18069 & #18070 (90° Outlet)

## IN-TANK UNIVERSAL GEAR PUMPS Part #19323 & #19324 (90° Outlet)

Like the idea of an Aeromotive Brushless Gear Pump in your fuel cell or custom fuel tank, but you have tight clearances above the tank? Aeromotive has you covered again with a new series of 90-deg outlet, low profile, Stealth Brushless Gear Pumps featuring remote mount. True Variable Speed controllers for the lowest profile possible.



#18069



#19324

	7.0GPM	10.0GPM	
In-Tank	Part #	Part #	
10" Drop-In	#18069	#18070	
Universal	#19323	#19324	
Fuel Cell	Part #	Part #	
6 Gallon	#19305	#19306	
15 Gallon	#19311	#19312	
20 Gallon	#19317	#19318	
Gas	NA	FI	FI
EFI	4,800hp	3,400hp	4,900hp
E85	NA	FI	FI
EFI	3,360hp	2,380hp	3,430hp

# PERFORMANCE IN-LINE FILTERS

Finally, a place where bigger really is better. As little pressure drop as possible. How do you achieve a low pressure drop? Surface area. How do you get a lot of area into a compact in-line filter? Pleats. More pleats mean more surface area and in turn, better flowing filter. Aeromotive in-line filters boast the most surface area absolutely possible for the highest flowing filter.

Our fuel filters aren't just better on the inside, they are arguably the most appealing filter in the industry on the outside. Variety, quality, unmatched performance, and finish leave all other filters in the dust. Don't trust your investment with any other filter.

## ORB-16 FUEL FILTER OUR BIGGEST FILTER EVER



		<b>238 MICRON</b> STAINLESS MESH ALL FUELS	<b>100 MICRON</b> STAINLESS MESH ALL FUELS	<b>40 MICRON</b> STAINLESS MESH ALL FUELS	<b>10 MICRON</b> CELLULOSE GAS & DIESEL	<b>10 MICRON</b> MISCO GLASS E85 / ALCOHOL
<b>ORB-06</b> 2"x5.8"	Black	#12390	-	-	-	-
	Element	#12690	-	-	-	-
<b>ORB-10</b> 2"x5.5"	Red	-	#12304	#12335	#12301	#12340
	Black	-	#12324	#12330	#12321	#12350
	Hard Coat	-	#12307	-	#12306	#12346
	Element	-	#12604	#12635	#12601	#12650
	Crimp Element	-	#12614	-	-	-
<b>ORB-12</b> 2.5"x7"	Pro-Series	-	#12302	#12342	#12310	#12339
	Hard Coat	-	#12309	#12343	#12311	#12341
	Element	-	#12602	#12642	#12610	#12639
<b>ORB-16</b> 2.625"x10"	Black	-	#12362	#12363	#12361	#12364
	Element	-	#12662	#12663	#12661	#12664

New larger bracket for this new, larger filter!

#12704 Bracket, Filter, 2.5"

#12705 Bracket, Filter, 2.625"



Watch the Video

Learn more about our full line of filters here!



# HIGH FLOW ACCESSORIES

## FLEX FUEL SENSOR ADAPTOR

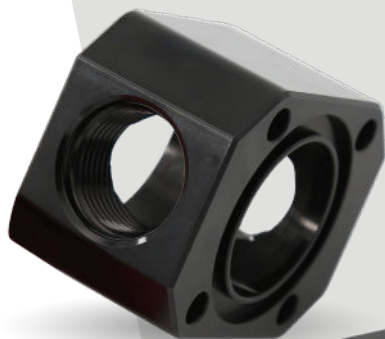
- Allows for the use of an Ethanol Sensor (Flex Fuel Sensor) to Determine the Percentage of Ethanol in Fuel
- Designed to Work with OEM Flex Fuel Sensor PN: (13577429, 13577379, and 13577394)
- OEM Sensor is Restrictive for Fuel Systems that Flow Greater than 400lph
- The Adapter Allows for Higher Flow Rate as it Creates an Alternative Route for the Fuel to take While Still Using the Sensor to Monitor the Ethanol Content
- Dual O-Ring Sealing on Tubing of the Flex Fuel Sensor
- ORB -10 Inlet/Outlet Ports that can be Adapted to any Fuel Line Size
- Adapter Body Constructed from 6061-T6 Aluminum Alloy with Bright Dip Anodize Finish



#15141

## DISTRIBUTION BLOCKS

Modular, dual ORB-08 Manifold for Aeromotive 6- or 12-GPM pumps. Ideal for adding two additional AN-08 ports to the outlet and/or the inlet of your mechanical pump for either EFI or mechanical injection applications. Supports using existing outlet and/or inlet adapters as currently installed.



#11710



#11711

#11710 - For use with pumps #11115 or #11117

#11711 - For use with pumps #11105 or #11107

## DELUXE WIRING KIT

### Part #16308

Ideal for Brushless 7.0 & 10.0 Gear Pumps to handle all the power our massive pumps crank out!



Watch the Video

- 75 Amp 12 VDC Automotive Relay
- 60 Amp 12 VDC Circuit Breaker
- 6-gauge Main Power and Ground Wires



# PERFORMANCE REGULATORS

## REGULATOR AND FILTER COMBO



#13146

#13146	#13226
EFI	Carb
40psi-75psi	3psi-20psi
A1000 and smaller pumps	250PGH and smaller pumps

- 10-micron cellulose filter paired with adjustable regulator for EFI or Carb applications
- AN-10 Inlet and Outlet Ports with AN-06 Return Port
- 1/8" NPT dedicated gauge port
- Easy installation for street performance vehicles
- Reduces required return line length



## THE LAST REGULATOR YOU'LL EVER NEED

Whether carbureted or EFI, naturally aspirated or forced induction, there's an X1 regulator that's right for the job. Making the change from a carburetor to EFI or EFI to carburetor? The Modular X1 regulator design permits conversion between these applications so you no longer need to purchase a new regulator. Conversion kits (sold separately) are available to match virtually any application, including P/N's #13013, #13014, #13015. Maximum flow capability is ensured thanks to full size ORB-08 inlet/outlet and return ports. The X1 Series regulator provides legendary Aeromotive flow and pressure control in a flexible format that can help meet your fuel system requirements now and in the future, plus providing a fully rebuildable platform that assures a lifetime of service.



#13303

	EFI	Carb	Big EFI
<b>Configuration</b>	.188" seat 35-75 psi	.313" seat 3-20 psi	.313" seat 35-75 psi
<b>Complete Regulators</b>	#13303	#13304	#13305
<b>Conversion Kits</b> <small>Diaphragm, Spring &amp; Seat</small>	#13013	#13014	#13015

## PRO-SERIES EXTREME FLOW EFI



#13134

This is the tuner's choice for high horsepower EFI applications. The Pro-Series Regulators can support up to 2,000hp. For engines requiring high volume, high pressure fuel delivery the Pro-Series EFI Regulators are perfect for big power combinations with 3.5 and 5.0 Brushless Gear Pumps.

<b>2 Port</b>
<b>#13134</b>
<b>4 Port</b>
<b>#13145</b>

- P/N 13134 and P/N 13145 Include two springs for 30-75 psi (installed) and 75-120 psi (provided)
- P/N 13134 includes 3x ORB-10 Ports including 2x inlet/outlet ports and 1x Return Port
- P/N 13145 Features 3x auxiliary ORB-08 ports available for nitrous applications, plus ORB-10 inlet and return ports
- References Vacuum/Boost on a 1:1 ratio
- Dedicated 1/8" NPT gauge port

# BELT DRIVE EFI REGULATORS



#13132



#13133

- Designed for use with Belt or Hex Drive Fuel Pumps - perfect for our 7.0 and 10.0GPM pumps
- 0.500" high flow valve/seat, able to handle 7-26 GPM
- Dual springs expand operating pressure range
- Standard spring (installed) supports 30-75 psi base
- High Pressure (included) supports 75-120 psi base
- Supports 1:1 vacuum and boost reference

2 Port
#13132 (x2) AN-10 ports
#13137 (x2) AN-12 ports

4 Port
#13133 (x1) AN-10 (x4) AN-08 ports
(x1) AN-10 return port

# EFI TO CARB CONVERSION REGULATOR

- Bypass pressure is adjustable from 8-16 psi, regulated pressure to the carburetor is adjustable from 5-9 psi
- 3/8" NPT inlet, outlet and return ports
- 1/8" NPT gauge ports



#13220

Allows any car or truck, originally equipped with a return-style EFI system, to affordably convert to a standard carburetor. Combine with our Stealth Tanks for a Carb application.

# COMPACT EFI

Aeromotive performance in a smaller and lighter package. Capable of supporting applications up to 1000hp, the #13129 regulator can handle high-flow EFI fuel pumps and the most aggressive street machines out there. It's perfect for those looking for a cleaner, lighter solution where performance is critical or where space is a premium.

- Base pressure is adjustable from 30-70psi
- (x2) ORB-06 inlet/outlet ports and (x1) ORB-06 return port
- Dedicated, 1/8" NPT gauge port and vacuum boost port
- Fuel pressure rises on a 1:1 ratio when referencing boost



#13129



#13136

#13136	All Black Regulator
#13129	Silver/Black Regulator
#13130	Regulator w/ (x3) ORB-06 port fittings and (x1) 0-100psi gauge



# PERFORMANCE FUEL RAILS

## 2020+ FORD 7.3 GODZILLA



Watch the Video



### FUEL RAIL KIT Part #14168

- 5/8" Bore High Flow Fuel Rail
- ORB-08 Inlet and Outlet Ports
- Complete with Mounting Brackets

## 2004-2014 SUBARU WRX/STI

### TOP FEED FUEL RAILS

Part #14169

- -ORB-08 Ports with compact connections and positive, leak-free sealing
- Full 5/8" ID through bore, capable of supporting up to 3,000 HP
- Full size ports at each end for optimal injector supply and minimal hydraulic fluctuation



## QUALITY SPECIALTY FITTINGS



#15134



#15136



#15730



#15731



#15732

#15133	One Way Check Valve, -10 (Methanol/Ethanol Compatible)
#15134	5/8 Quick Connect Male x AN -08 ORB
#15135	90 Degree Fitting, 3/8 Male Quick Connect x AN -06 ORB
#15136	5/8 Quick Connect Male x AN -08 ORB (Short)
#15137	Tee, 3/8 Quick Connect Female x 2x AN -08 ORB Female Port
#15138	Tee, 5/16 Quick Connect Female x 2x AN -08 ORB
#15139	5/16 Quick Connect Male x AN -06 ORB

#15140	5/8 Quick Connect Male x 3/8-MNPT
#15730	AN -12 ORB x AN -16 Flare
#15731	ORB -06 x AN -06 Male Flare with 1/8 NPT Port
#15732	ORB -08 x AN -08 Male Flare with 1/8 NPT Port
#15733	ORB -10 x AN -10 Male Flare with 1/8 NPT Port
#15734	ORB -12 x AN -12 Male Flare with 1/8 NPT Port
<i>And so many others online!</i>	

# SERIOUS APPAREL

Traditional Aeromotive  
**HAT**



Universal & Adjustable

Serious Fuel Systems **HOODIE**



Available in S-5XL

Serious Fuel Systems  
**SWEATSHIRT**



Available in S-5XL

Serious Fuel Systems  
**LONG SLEEVE**



Available in S-5XL

Serious Fuel Systems  
**T-SHIRT**



Available in S-5XL

Classic Race Track  
**T-SHIRT**



Available in S-5XL



[AEROMOTIVEINC.COM](http://AEROMOTIVEINC.COM)

**A PERTRONIX PERFORMANCE BRAND**

913.647.7300 | 7805 BARTON STREET, LENEXA KS 66214



**WARNING :** This product can expose you to chemicals, including chromium, which is known to the State of California to cause Cancer or birth defects or other reproductive harm. For more information visit [www.p65warnings.ca.gov](http://www.p65warnings.ca.gov)